

ANOTHER
LOOK
AT
THE

EAA
AVIATION
CENTER



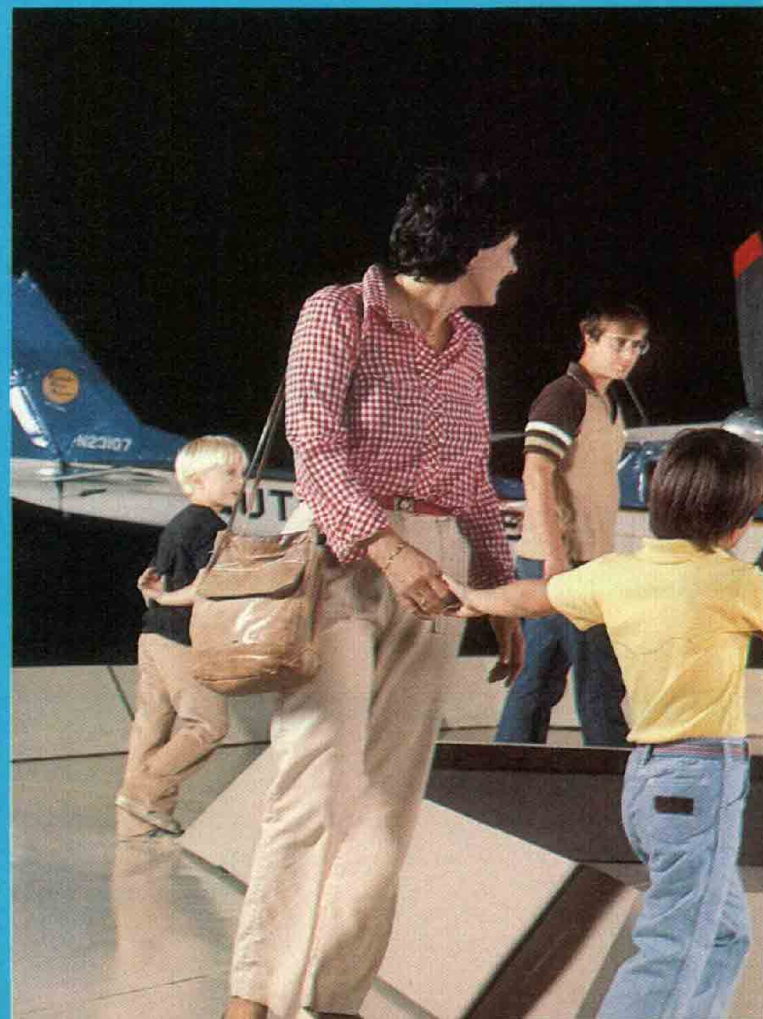
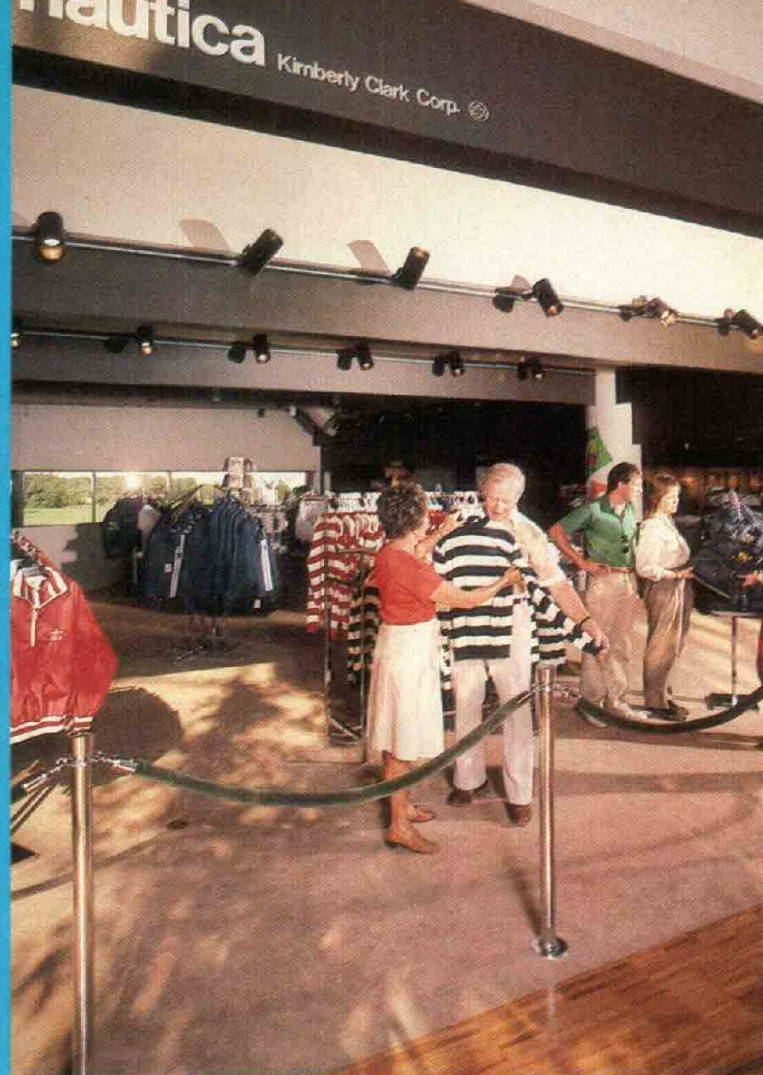
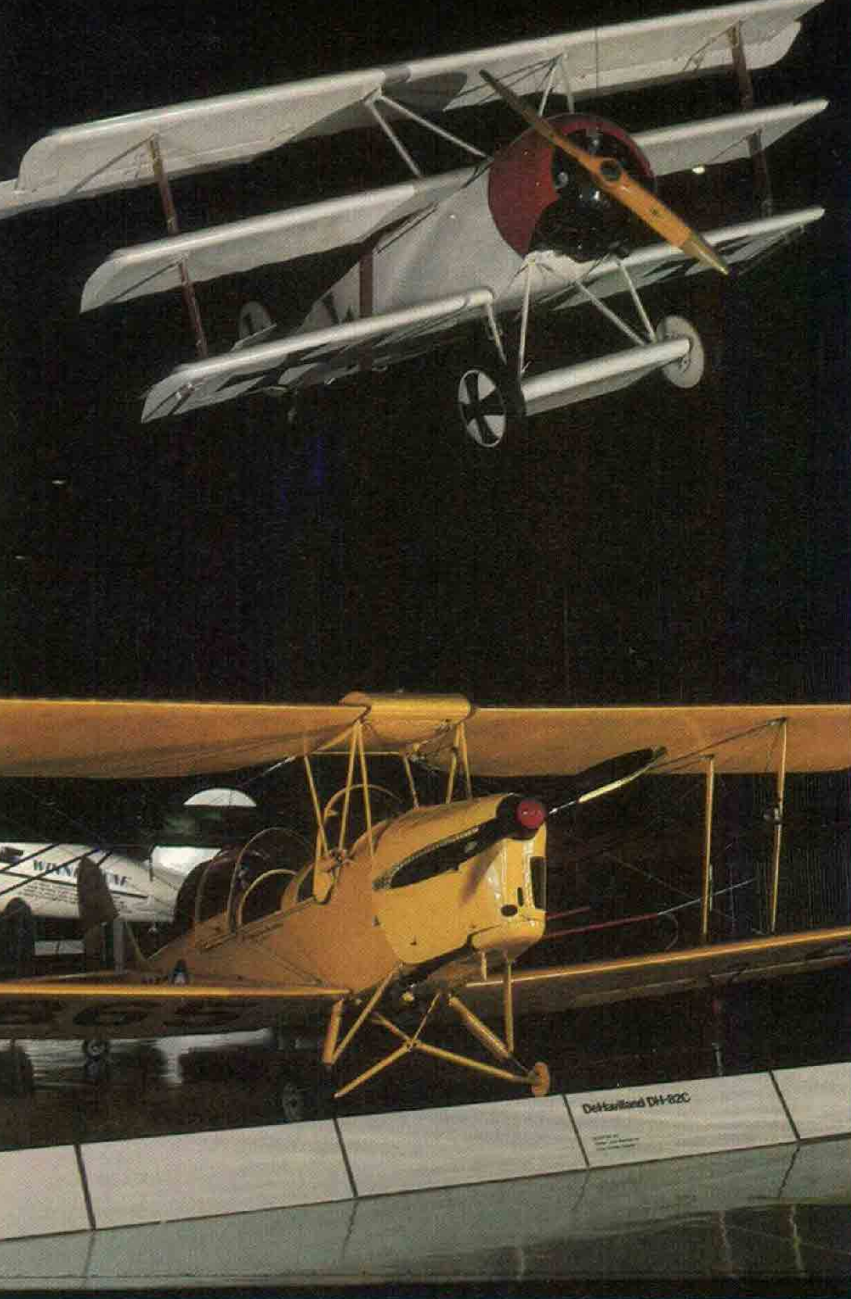
This month, we move inside for views of the spectacular new EAA Aviation Center . . . after a couple more exterior views of the building now that the grass has taken hold and the flowers are in bloom. The aerial photographs are by Ted Koston.

The interior shots on surrounding pages are by Dick Matt, EAA's Director of Marketing and Communications.

The museum wing of the Center (to the right of the tower entrance) is completely dark inside, with all the displays individually spotlighted. The effect is stunning — the aircraft on the floor sparkle and glitter as you walk around them, and those suspended from the ceiling seem to drift into your consciousness out of an ethereal night. But . . . let the pictures tell the story.

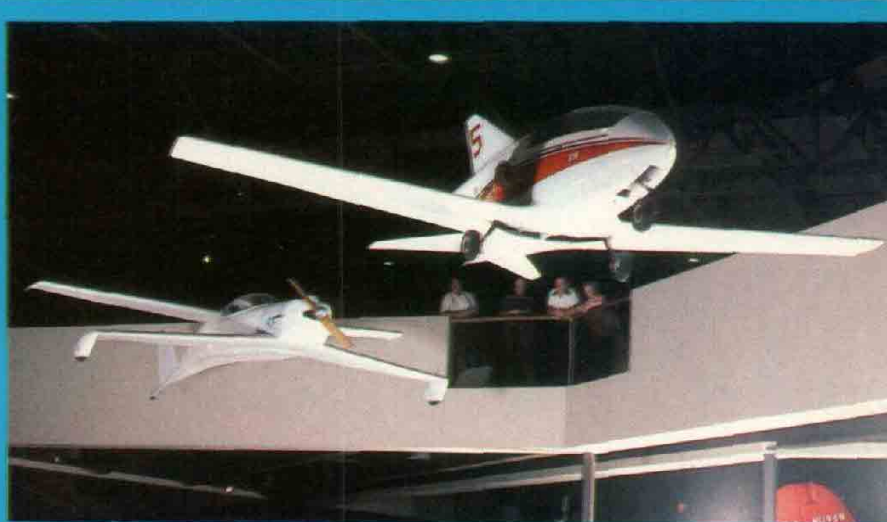








Stits SA-2A "Sky Baby"





Paul and Tom Poberezny.

